



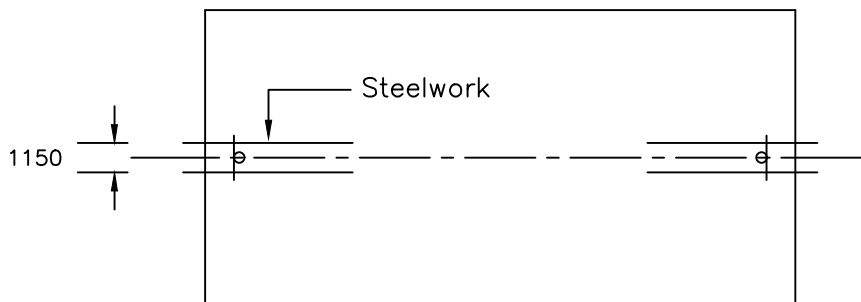
Universal Services require supporting steelwork to be installed by the customer or his nominated subcontractor prior to the installation by Universal Services of any roof mounted basketball goal.

Universal Services require that the steelwork is to the following specification :-

For each goal, 2 x Universal Beams of a suitable size (dependant on distance between fixings (minimum size = 127 x 76mm x 13Kgm)) are to be fixed in a suitable location at 1150mm centres \pm 1mm and centered upon the centre line of the basketball court.

Maximum height to underside of steelwork is 10m.

(see sketch below for details)



Universal Beams are to be level in both planes and are to be situated in a location agreed between Universal Services and the customer.

The length and location of the beams is dependant on :-

- a, Roof fixings available
- b, Size of basketball court
- c, Height of hall
- d, Location of court within the hall
- e, Type of goal to be fitted eg. forward fold, rearward fold, 30 degree etc.

To calculate the length of the beams see information sheets Nos. 1051,1061 & 1071

For weights of goals and further information see information sheets relating to roof mounted basketball goals Nos. 1011,1021,1031 & 1042

NB: on most types of goal a clear space is required above the steelwork to accommodate the ring and electric winch. It may therefore be necessary to fix the steelwork on drop legs.

This information sheet is intended as a guide only Universal Services should be consulted to approve steelwork drawings prior to installation.

TITLE STEELWORK SPECIFICATION FOR ROOF MOUNTED BASKETBALL GOALS

INFO SHEET No. 1081

DATE 24.04.2015 ISSUE D DRAWN PS SCALE N.T.S.