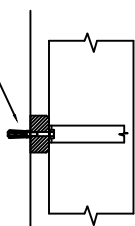
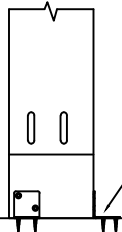


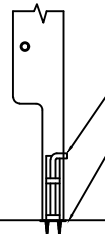
Fillets Fixed with M10 Rawlbolts



See Info Sheet No.6711  
For Floor Plate Locations



Angle Brackets Fixed with  
38mm No 10 Woodscrews



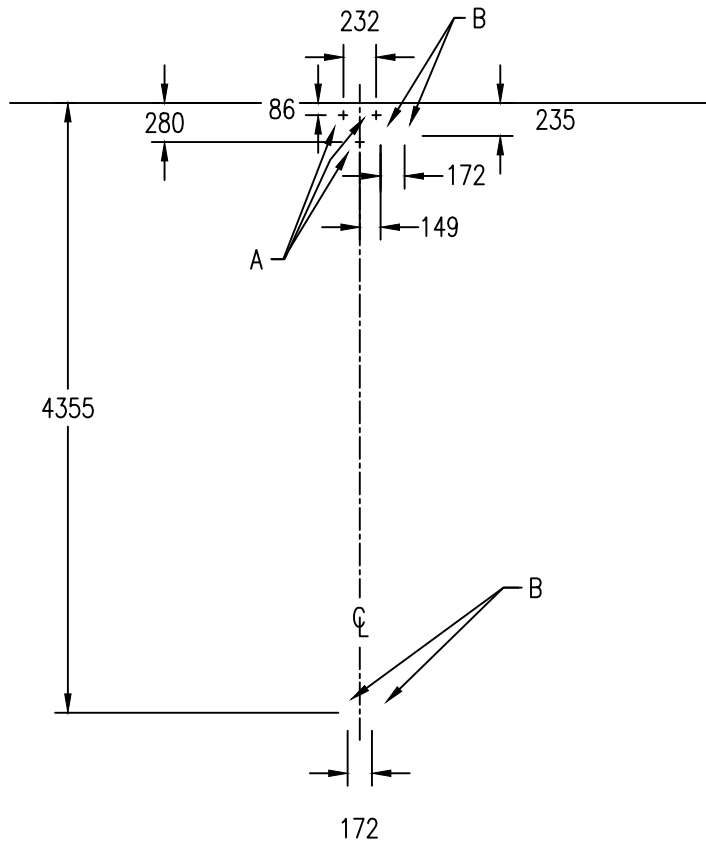
Shoot Bolt

Floor Plate Fixed with  
38mm No 10 Woodscrews

TITLE  
Travelling Upright Counterbalanced Beam

INFO SHEET No. 6721

DATE 19.7.22 ISSUE C DRAWN KT SCALE N.T.S

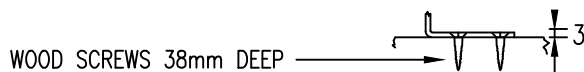


For General Arrangement  
See Info Sheet No 6721

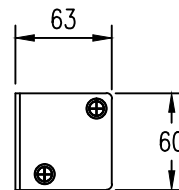
NOTES

- 1, ALL DIMENSIONS TO BE RELATIVE TO CL. DIMENSION FROM WALL TO PLATES MAY VARY DUE TO OBSTRUCTIONS TO FRAMES (IE RADIATORS).
- 2, PLATES 'A' ARE TO BE SURFACE MOUNTED, WHERE PLATES 'B' ARE INLAID.
- 3, A 300mmx300mm PAD TO BE LEFT CLEAR OF PIPES, BASED CENTRAL AROUND FLOOR PLATE TYPES 'A' & 'B'

FLOOR PLATE TYPE A



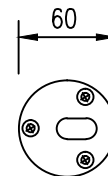
FLOOR PLATE TYPE A



FLOOR PLATE TYPE B



FLOOR PLATE TYPE B



TITLE TRAVELLING UPRIGHT COUNTERBALANCED BEAM UNIT  
STANDARD FLOOR PLATE LAYOUT (STORED RIGHT)

INFO SHEET No. 6711

DATE 12.05.2015	ISSUE B	DRAWN PS	SCALE NTS
--------------------	------------	-------------	--------------