



1



1 CENTRAL SUPERFLOATS

White floats only, great training aids

SWM1040	290 x 220 x 25mm	£3.60 each
SWM1041	320 x 240 x 30mm	£4.13 each

2 KICKBOARDS

Manufactured from standard closed cell polyethylene. Junior board is 29.5 x 22 x 2.8cm, senior board is 32 x 24 x 2.8cm

SWM1064	Junior blue board	£3.73 each	SWM1068	Senior blue board	£4.16 each
SWM1065	Junior red board	£3.73 each	SWM1069	Senior red board	£4.16 each
SWM1066	Junior yellow board	£3.73 each	SWM1070	Senior yellow board	£4.16 each
SWM1067	Junior white board	£3.73 each	SWM1071	Senior white board	£4.16 each



3 DELPHIN SWIM AIDS

No need to inflate this solid arm float. Tough and durable it has a long life. It is important that the arm slides comfortably through the flange as the disc may be subject to damage if it is forced through. Surprisingly lightweight. Three discs per arm provides enough buoyancy for most beginners. Discs are removed as ability and confidence increases. Senior discs are orange, junior discs come in assorted colours

SWM1044	Up to 12 years	£5.14 disc
SWM1045	Over 12 years	£7.78 disc

4 SWIM BELT

This swim belt is a great confidence builder. The 'floating' blocks tie around the chest comfortably, giving the child the security of a buoyancy aid, without sacrificing freedom of limb movement

SWM1072	5 block, 2-6 years	£8.51 each
SWM1073	6 block, 6-12 years	£9.77 each



5 PULLBOUY

The pullbuoy is placed between the users' thighs to aid buoyancy, this helps swimmers improve upper body strength and focus on learning different types of strokes, making it ideal for coaching sessions

SWM1074	Junior	£4.43 each
SWM1075	Senior	£6.42 each



1

1 EGG FLIPS

SWM1076

£4.78 per set

Egg Flips are a novel way to teach the importance of correct breathing technique. Blow forcefully on the egg at water level and over it flips. Supplied as a set of 10

2 SWIM FIN

SWM1077

£28.11 each

This swimming aid approved and endorsed by the A.S.A. complies with EN13138 and EN71 buoyancy requirements. Ideal for beginners as a teaching and swimming aid. Encourages the new swimmer to change their position in the water as stroke technique develops. The fin comes out of the water as the body position changes and confidence improves



2



3

3 DIVE STICKS

SWM1078

£8.31 set

These 20cm long Dive Sticks are brightly coloured, weighted and stand vertical on the bottom of the pool. Each dive stick has a number on it, meaning further fun competitions can be played. Supplied in a set of 6

4 DIVE RINGS

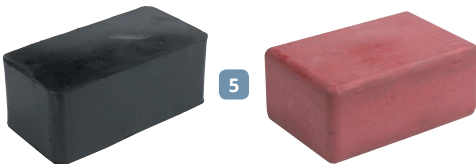
SWM1079

£8.04 set

Set of 4 colourful rings, weighted on one side to sink quickly and stand vertically on the bottom so they can be picked up



4



5

5 DIVE BRICKS

Colour coded bricks which cannot damage pool surface. For use in diving activities

SWM1047

Junior size

£12.32 each

SWM1048

Senior size

£16.74 each



7

6 SLALOM

SWM1058

£7.33 set

Set of 4 plastic strips which are weighted at one end to allow them to stand vertically on the pool bottom, thus allowing the swimmer to complete the slalom course

7 WEIGHT AND HOOP

SWM1059

£11.53 each

For underwater fun in the pool, a large 76cm hoop with weight and adjustable rope which allows different height setting



8

8 HALF HOOP

SWM1080

£10.31 each

This hoop has a weighted crossbar that lets the hoop stand upright on the bottom of the pool. Can be used for underwater obstacle courses



6

1 MINI WATER BASKETBALL GOAL

SWM1081

£17.42 each

This goal allows children to have a fun game of basketball in the pool, while developing their swimming techniques at the same time



2 LIGHTWEIGHT BALL

SWM1055

£3.26 each

Lightweight ball, 215mm diameter, colour may vary

3 WATER VOLLEYBALL NET

SWM1082

£175.78 each

Large volleyball game made from lightweight aluminium. Extremely stable in the water, easy to assemble and dismantle



4 MIKASA SQUISH VOLLEYBALL

SWM1057

£17.74 each

A moulded Squish reduced weight volleyball. The Squish comes in green and blue colour and is a 230g volleyball. These balls are a great choice for swimming pool volleyball games

5 MINI END WATER POLO GOAL

SWM1083

£195.04 each

This is a more serious goal for developing water polo players; easy to assemble and dismantle with 50mm tubular white PVC push fit components. Supplied complete with net and net ties. Size: 1.39 W x 0.65 H x 0.45m D



6 WATER POLO BALL

This ball is ideal for younger players. Butyl rubber bladder with nylon reinforcement and a buffed top surface makes for a durable ball. Colour green only

SWM1084

Size 2

£25.40 each

SWM1085

Size 3

£25.40 each

7 FLEXIBEAMS (WOGGLES)

Highly attractive, ultra flexible, fluorescent, foam noodles. 69mm dia. x 158cm long. Ideal as safe play items for children

SWM1086

Blue

£2.75 each

SWM1087

Green

£2.75 each

SWM1088

Red

£2.75 each

SWM1089

Yellow

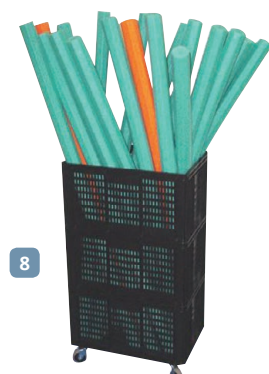
£2.75 each

8 FLEXIBEAM STORAGE TROLLEY

SWM1039

£160.24 each

Mobile synthetic basket for up to 40 flexibeams. Meshed to allow easy drainage. Supplied on castors





1 FOAM RESCUE TORPEDO

SWM1090

£86.91 each

Made from PE foam with an adjustable belt with varying fixing positions

1

2 LIGHTWEIGHT LIFEBUOY

SWM1091

£40.11 each

The lightweight lifebuoy is extremely durable in even the worst conditions, thanks to its rigid plastic with integral moulded ring. Diameter is 53cm



2



3

3 LIFEBUOY STAND

SWM1019*

£278.07 each

100mm diameter stainless steel post with flange fitting, hook to take lifebuoy (lifebuoy not included)

4 AQUABOARD

SWM1092

£968.12 each

The aquaboard has been designed and developed in conjunction with the RLSS UK for the rescue of casualties with suspected spinal injuries from swimming pools and leisure centres. The aquaboard can be used to immobilise a casualty in the water and to ease recovery on the poolside. It has a neoprene back support that attaches to the board to prevent the casualty from slipping and has instructions for patient positioning printed on the support. It is specially designed to float up and under the casualty



4



5A

5 OBSERVATION CHAIRS

A SWM1015*

£834.89 each

Standard observation chair, 38mm diameter stainless steel tubular framework with plastic seat, platform and treads, rubber feet for ease of movement

B SWM1016*

£1,046.34 each

Wall mounted observation chair, 38mm diameter stainless steel tubular framework with flanges for fixing to floor and wall, plastic seat, platform and treads

C SWM1017*

£646.90 each

Reduced height observation chair

D SWM1018*

Price on application

Pedestal observation chair, 100mm diameter stainless steel single column, for grouting into pool surround, 38mm diameter handrail ladderway with treads, swivel plastic seat and non-slip platform



5B



5C



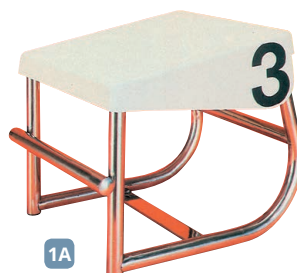
5D

1 STARTING BLOCKS

A SWM1001*

£584.72 each

Standard pool starting block, stainless steel tubular framework with backstroke bar. G.R.P. (glass reinforced plastic) platform with non-slip surface and lane numbers on two sides. Requires two holdfast anchors (not supplied)



1A

B SWM1002*

£703.21 each

Deck level starting block, stainless steel tubular framework with backstroke bar, fixing positions for turning boards. G.R.P. platform with non-slip surface and lane numbers on two sides. Requires three holdfast anchors (not supplied)



1B

C SWM1003*

£744.94 each

Standard pool competition starting block, stainless steel 316 grade framework with backstroke bar and hidden fixing points. G.R.P. platform 500 x 500mm with non-slip surface and supplied with lane numbers to sides. Template is required for setting out the four holdfast fixings (not supplied)



1C

D SWM1004*

£1,077.39 each

Deck level competition starting block, stainless steel 316 grade framework with backstroke bar and hidden fixing points. G.R.P. platform 500 x 500mm with non-slip surface and supplied with lane numbers to sides. Template is required for setting out the four holdfast fixings (not supplied)

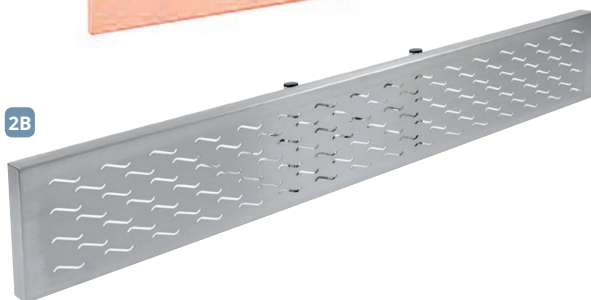


1D

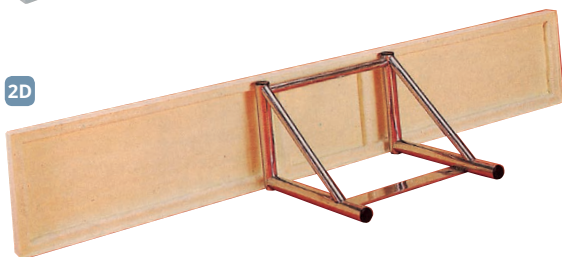
2A



2B



2D



2E



2 TURNING BOARDS

A SWM1093*

£581.33 each

Deck level GRP turning board 1900mm long, increases the height of the pool edge during competition

B SWM1005*

£383.35 each

Deck level pool turning boards to increase height of pool edge during competition, fixed to competition starting block at one end of the pool. Features stainless steel perforated sheet onto stainless steel tubular frame. 1900mm long

C SWM1006*

£448.27 each

As SWM1005 but 2400mm long

D SWM1007*

£242.84 each

Competition turning board bracket only for fixing boards to pool surround where no starting block is used. Stainless steel tubular frames, requires two holdfast anchors (not supplied)

E SWM1008*

£298.70 each

Competition turning board bracket for fixing turning board to pool surround to be used in conjunction with SWM1003 and SWM1004 competition starting blocks. Stainless steel 38mm diameter tubular bracket with pinched socket grouted into pool surround

3 HOLD FAST ANCHORS / EYEBOLT

SWM1062*

£25.23 each

Fixing holdfast, stainless steel for grouting into pool wall/floor

SWM1063*

£36.10 each

As SWM1062 but with the addition of a spring cover covering the hole when bolt not in position

SWM1094

£12.64 each

Racing line hook for screwing into holdfast



1 WARNING EQUIPMENT

SWM1014* Backstroke **£385.85 set**

Backstroke warning equipment, stainless steel posts 38mm diameter with hook at the top for rope, socket with drop in cover for grouting in pool surround

SWM1110* False start **£165.92 set**

Stainless steel posts 38mm diameter with hook at the top for rope, sockets with drop in covers for grouting in pool surround

2 ANTI WAVE MAXI RACING LANES

The maxi swimming racing lane has a 150mm disc and comes complete on Stainless Steel 316 cable with a super tensioner. The discs are manufactured from UV stabilized high density polyethylene for both strength and durability. The anti wave super tensioner is superior to outdated turnbuckle technology and does not fray cable, no tools are required and it can give tremendous tension down the lane line. The Maxi swimming lane can be supplied in many colours to suit both club and international competition, please contact us to discuss your requirements

SWM1097	50m long	£1,083.42 each
SWM1098	25m long	£523.65 each



3 ANTI WAVE MIDI RACING LANES

The midi swimming racing lane is an extremely popular product and is used extensively for club competition and pool division. It has a 110mm disc and is fitted to stainless steel 316 cable and comes complete with a super tensioner ready to be fitted to the pool. The discs are manufactured from UV stabilized high density polyethylene for both strength and durability. The super tensioner is superior to outdated turnbuckle technology and does not fray cable, no tools are required and it can give tremendous tension down the lane line. This swimming lane can be supplied in many colours to suit both club and international competition, please contact us to discuss your requirements

SWM1099	50m long	£776.45 each
SWM1100	25m long	£423.65 each



4 STORAGE REEL

SWM1101 **£1,068.14 each**

Holds up to six 25m midi lanes or four 25m maxi lanes. Manufactured from top quality corrosion-resistant powdercoated aluminium, castors are made from corrosion resistant stainless steel

